

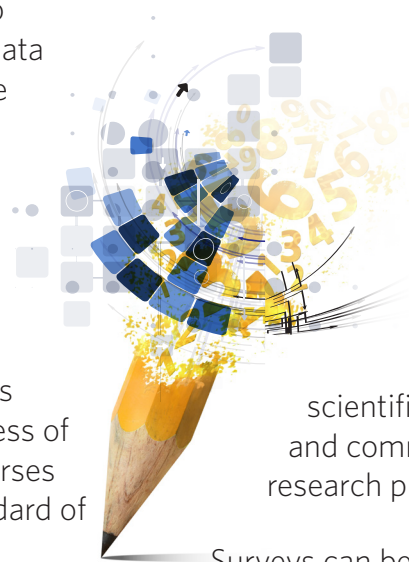
Evaluation Strategies to Achieve an A+ Report Card

Deliver on the promise of higher education. Find out how with research programs built for educational institutions

In today's education system, it is essential for institutions to incorporate evaluation and data analysis strategies to provide educational leaders with valuable and meaningful information for personnel or course progress reports.

Research & Insights from Harland Clarke Digital helps educational institutions effectively monitor the success of workshops, lectures and courses to help maintain a high standard of management and learning.

This evaluation is an opportunity to understand whether resources allocated to a certain topic are meeting curriculum standards, allowing your institution to take action based on any level of success or failure.



With more than 40 years of experience working with educational institutions, consultants can help analyze feedback and offer recommendations to implement, revise or remove programs as well as gather scientific data to help conduct and communicate results for major research projects.

Surveys can be distributed through a variety of channels, including phone, direct mail, IVR and web. Our quality, service and security standards are best-in-class so you'll never have to worry about the integrity of your data.

Ignoring the evaluation process for educational institutions is like not preparing for finals. Minimize the risk with Research & Insights

Education Research & Insights: Specialized surveys for every need

- Management Surveys
- Demographic Data Collection
- Psychographic Data Collection
- Lecture Evaluations
- Course Evaluations
- Ethnographic Data Collection

Interested in learning more? Contact Harland Clarke Digital today!

info@hcdigital.com | 630.303.5000 | www.hcdigital.com